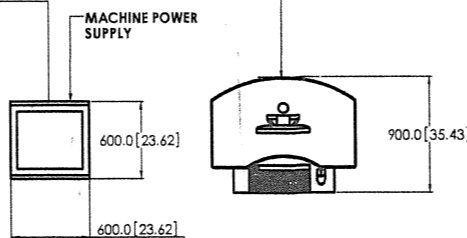
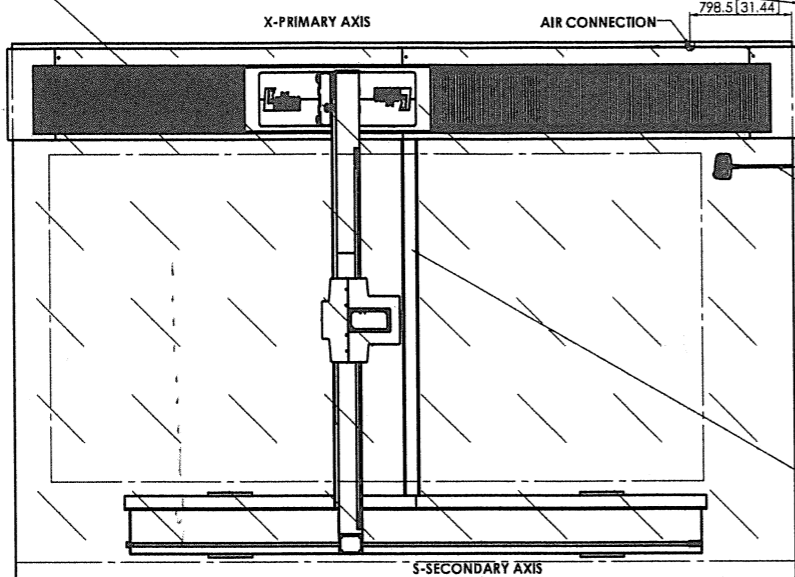


BELLOW COVERS TO PROTECT GUIDEWAY FROM ATMOSPHERIC CONTAMINANTS (DUST & WATER ETC) ONLY. NOT TO BE WALKED ON.

MACHINE LOOM CONTAINED IN 55mm OUTSIDE DIAMETER FLEXIBLE REINFORCED PLASTIC CONDUIT OR 150 X150 TRUNKING. MACHINE MAIN LOOM LENGTH 4000 UNLESS OTHERWISE SPECIFIED.



HANDBOX CABLE LENGTH 10000 [393.7] UNLESS OTHERWISE SPECIFIED.

THIS END OF THE CMM IS DESIGNATED THE FRONT OF THE MACHINE. THE RAILS WILL BE HIGHLIGHTED ACCORDINGLY.

CONNECTION CABLE BETWEEN RAILS PLACED IN TRENCH.

CUSTOMER: METROLOGIA SARIKI S.A.

MODEL ULTIMA  
TRAVELS X AXIS 4064 [160.0]  
Y AXIS 2540 [100.0]  
Z AXIS 2540 [100.0]

[A] MACHINE WEIGHT  
GRANITE MASS PRIMARY X-GUIDEWAY 4562 Kg [10057 lbs]  
GRANITE MASS SECONDARY S-GUIDEWAY 3081 Kg [6792 lbs]  
MOVING MASS 1339 Kg [2952 lbs]

[B] POWER SUPPLY  
SEE MACHINE SPECIFICATION OR FINAL MACHINE QUOTATION FOR DETAILS. PHYSICAL CONNECTION AT CUSTOMER'S ISOLATOR.

[C] AIR SUPPLY AT MACHINE: (REQUIRED TO ENSURE MACHINE RELIABILITY)  
SEE MACHINE SPECIFICATION OR FINAL MACHINE QUOTATION FOR DETAILS. CLEAN DRY AIR AT MACHINE CONNECTION THROUGH TWO Ø 13[0.5"] BORE FLEXIBLE PIPE TERMINATING IN A HOSE TAILPIECE CONNECTORS. ROUTE PIPING SO AS TO NOT OBSTRUCT MACHINE SIDE OR END ACCESS. CONTINUOUS AIR SUPPLY REQUIRED DURING MACHINE OPERATION IS CUSTOMERS RESPONSIBILITY.

[D] AIR QUALITY: (REQUIRED TO ENSURE MACHINE RELIABILITY)  
SEE MACHINE SPECIFICATION OR FINAL MACHINE QUOTATION FOR DETAILS.

[E] ENVIRONMENTAL AIR QUALITY  
SEE MACHINE SPECIFICATION OR FINAL MACHINE QUOTATION FOR DETAILS.

[F] MACHINE OPERATING ENVIRONMENT: (REQUIRED DURING MACHINE PASSOFF)  
SEE MACHINE SPECIFICATION OR FINAL MACHINE QUOTATION FOR DETAILS.

[G] ENVIRONMENTAL VIBRATION  
SEE MACHINE SPECIFICATION OR FINAL MACHINE QUOTATION FOR DETAILS.

[H] MACHINE STORAGE ENVIRONMENT: (REQUIRED TO ENSURE NO DAMAGE OR EQUIPMENT FAILURE)

MINIMUM TEMPERATURE: 10 °C [50 °F]  
MAXIMUM TEMPERATURE: 35 °C [95 °F]  
RELATIVE HUMIDITY: 20%-80% (NON-CONDENSING)

[J] GENERAL NOTES  
SEE NOTE ON LOADS APPLIED BY MACHINE SUPPORTING FLOOR ON PAGE 2 OF THIS DRAWING. ALL UNITS PER SI SYSTEM WITH IMPERIAL EQUIVALENTS.

[K] ITEMS FOR CUSTOMER SUPPLY

- a) TWO 13mm OR 0.5 IN FLEXIBLE AIR LINES (ONE PER RAIL) UP TO MACHINE REGULATORS.
- b) ELECTRICAL ISOLATOR LOCAL TO MACHINE SUITABLE FOR THE COUNTRY OF DESTINATION.
- c) A 3 PHASE ELECTRICAL SUPPLY IF REQUIRED FOR ANCILLARY EQUIPMENT. E.G. COMPRESSORS.
- d) SUITABLE CONCRETE FLOOR SEE GENERAL NOTES AND LOAD CONDITIONS GIVEN ABOVE.
- e) WALKWAYS AND ALL SUPPORTING STEELWORK.
- f) SUITABLE GROUTING MATERIAL AND ANCHOR BOLTS TO SECURE FIXATORS.
- g) LK SUPPLIED CABLES CONNECTED BY CUSTOMERS TECHNICIAN TO ELECTRICAL ISOLATOR.
- h) FIXED BARRIERS FOR HAZARDOUS AREA.

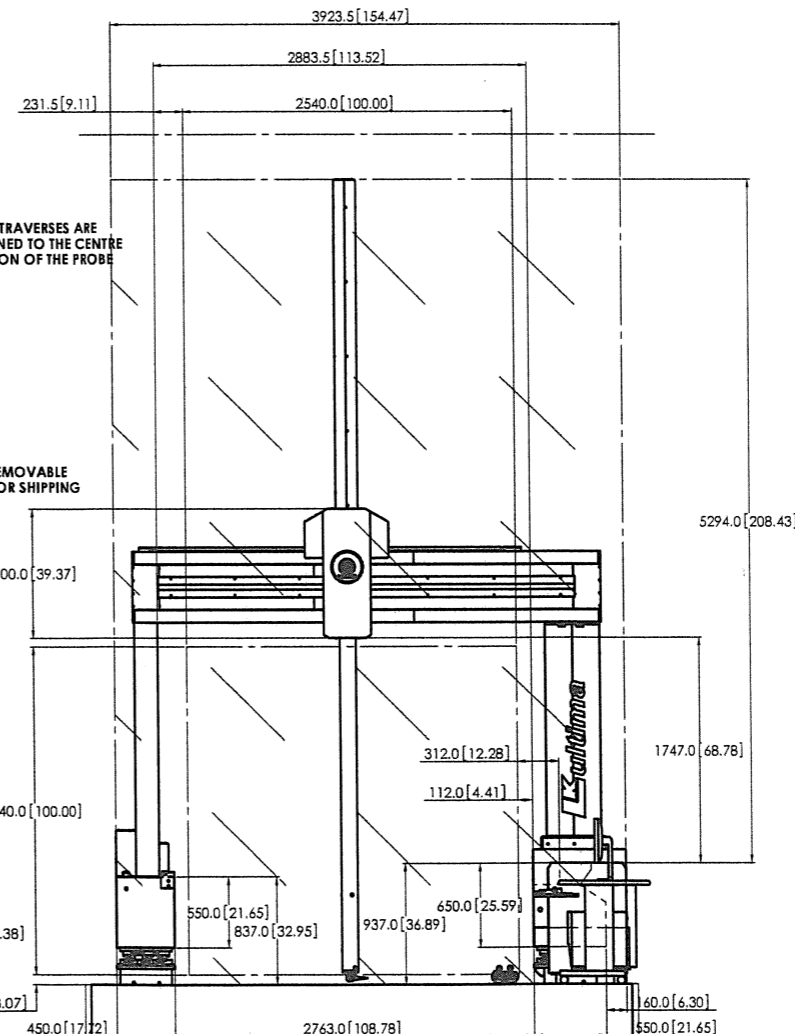
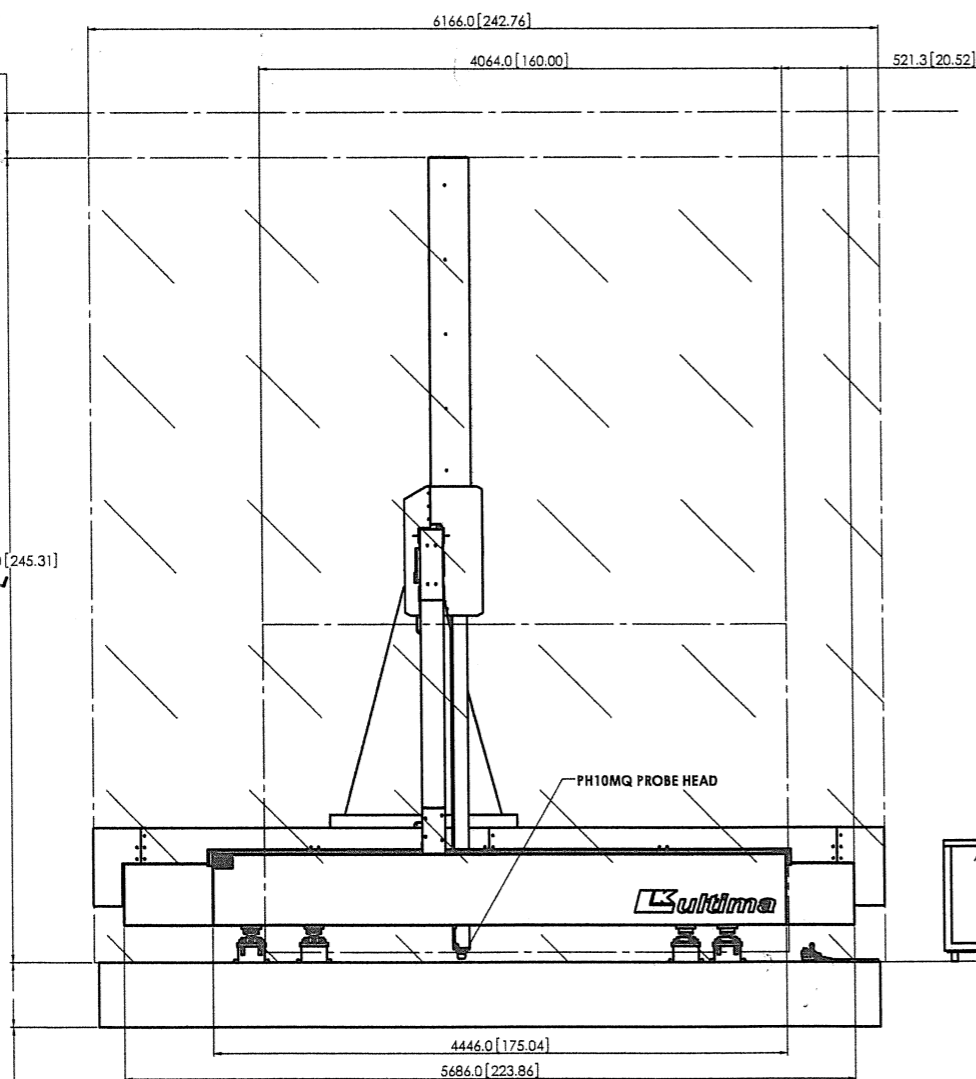
[L] MACHINE ACCURACIES.  
SEE MACHINE SPECIFICATION OR FINAL MACHINE QUOTATION FOR DETAILS.

PLEASE CONTACT METRIS INSTALLATION DEPARTMENT IN CASE OF ANY QUERIES AT THE ADDRESS GIVEN BELOW:-

METRIS UK LTD,  
ARGOSY ROAD,  
EAST MIDLANDS AIRPORT,  
CASTLE DONINGTON,  
DERBYSHIRE,  
DE74 2SA,  
UNITED KINGDOM.

CONTRACT NUMBER : 66053

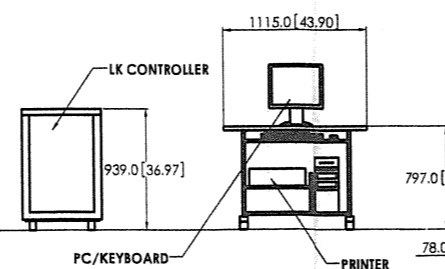
350.0 [13.78] MIN PREFERRED ROOF CLEARANCE FOR INSTALLATION OF BRIDGE ONTO GRANITE



NOTE: ALL TRAVERSES ARE DIMENSIONED TO THE CENTRE OF ROTATION OF THE PROBE HEAD.

TOPHAT REMOVABLE TO HERE FOR SHIPPING

HAZARDOUS AREA OF SWEEP VOLUME OF MACHINE AS HIGHLIGHTED TO BE CLEARLY IDENTIFIED BY CUSTOMER.



IT IS THE RESPONSIBILITY OF THE CUSTOMER OR THEIR APPOINTED SUB-CONTRACTOR TO CONSTRUCT A MONOLITHIC FLOOR TO SUPPORT BOTH MACHINE AND COMPONENT WHICH ACHIEVES THE STIFFNESS AND VIBRATION ISOLATION REQUIREMENTS SPECIFIED IN TECHNICAL BULLETINS UK554 TO UK564 "CMM FOUNDATION DESIGN GUIDELINES" AS A MINIMUM THE FOUNDATION MUST BE 'K' THICK MANUFACTURED FROM CONCRETE WITH A MINIMUM SHEAR STRENGTH OF 0.4 N/mm<sup>2</sup> [58 psi] TO ENSURE THAT SUPPORTS ARE NOT PUNCHED THROUGH FLOOR AS GRANITE IS INSTALLED. HOWEVER ACTUAL THICKNESS TO ACHIEVE THICKNESS REQUIREMENTS SPECIFIED IN TECHNICAL BULLETINS UK556 TO UK564 IS NORMALLY LARGER THAN 'K'.

ANTI-VIBRATION MATERIAL MAY OR MAY NOT BE REQUIRED SEE TECHNICAL BULLETINS UK556 TO UK564 FOR LK VIBRATION REQUIREMENTS.

 3rd ANGLE PROJECTION ALL DIMENSIONS ARE MILLIMETRES UNLESS OTHERWISE SPECIFIED. DIMENSIONAL TOLERANCES UNLESS OTHERWISE SPECIFIED: MILLIMETRES 0 PLACE ± 1.0 1 PLACE ± 0.25 2 PLACES ± 0.1 3 PLACES ± 0.025	 THIS DOCUMENT IS THE PROPERTY OF METRIS LTD AND MAY NOT BE COPIED OR COMMUNICATED TO A THIRD PARTY OR USED FOR ANY PURPOSE OTHER THAN FOR WHICH IT IS SUPPLIED WITHOUT THE EXPRESS WRITTEN AUTHORITY OF METRIS LTD.	DRAWN D.N. CHECKED APPROVED DATE 24/08/07 SCALE 1:20
		TITLE METROLOGIA SARIKI DRAWING No ZSB0036 SHEET 1 OF 2